

Yarmuk Basin in Syria

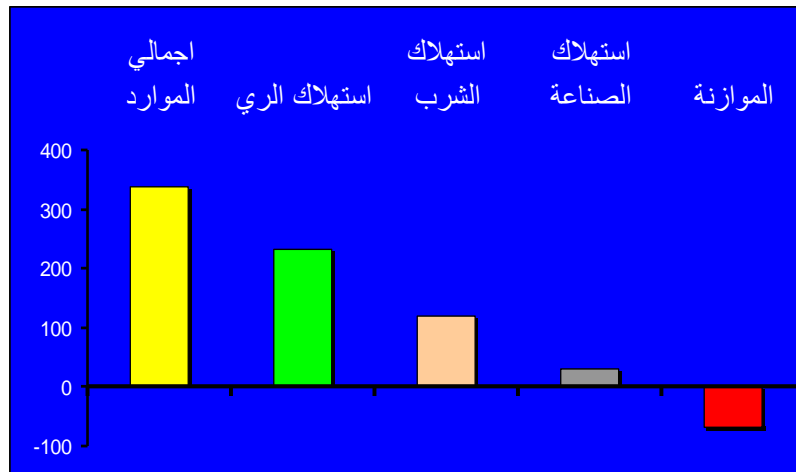
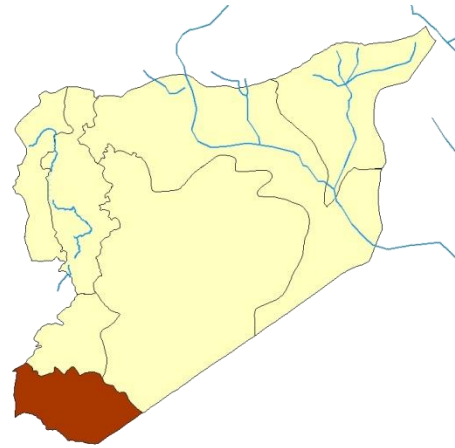
- About 75% of the surface area of the Yarmuk Basin is located in Syrian territory.
- The beneficiary population in the Basin is 1.6 million approximately.

Yarmuk Basin in Syria

Water balance

water balance 2008-2009		unit	year -2008 2009
Water resources	Total incoming	MM3	256
	Regulated Surface water	MM3	64
	Regulated ground water	3MM3	189
	Total regulated resources	3MM3	253
	Irrigation drainage	MM3	11
	Sewage water	MM3	48
	Industrial drainage	MM3	26
	Total traditional	MM3	338
Water needs	Irrigated by surface water	Ha	3950
	Irrigated by ground water	Ha	27242
	Total irrigated aria	Ha	31192
	Surface water consumption	MM3	43
	Ground water consumption	MM3	191
	Total irrigation consumption	MM3	234
	drinking water consumption	MM3	121
	Industrial consumption	MM3	32
	Evaporation	MM3	18
	Total consumption and loses	MM3	405
	The dificied	MM3	-67

Yarmuk Basin in Syria



- Negative water balance(2008-2009).
- The deficit (-67) million M3.
- The indicators of negative balance is:
 - Drought of Some springs.
 - Decreasing discharge of important springs Ziezon & Mzeirib due to climate change observed during the past two decades and heavy ground water investment.
 - The per capita share has decreased to 176 M3 per year.

Yarmuk Basin in Syria

- During the Syrian crisis, the infrastructures of water projects suffered great damage, add to Lack of energy, all that led to great decrease of water investment.
- The result is shown the huge decrease of the water resources compared to 30 years ago.